

How many kea can you find on this page? Colour them in **green** and **orange**.



There are kea.

Can you draw a line between the kea on one side doing the same thing as a kea on the other side?



Cut out the pictures on this page and past into Worksheet #3B on the next page



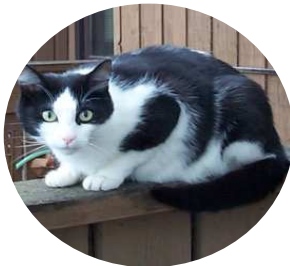
What are the most kea doing?

7				
6				
5				
4				
3				
2				
1				
	<i>Picture of Kea playing</i>	<i>Kea flying</i>	<i>Kea feeding</i>	<i>Kea in tree</i>

The most kea are _____.

The fewest kea are _____

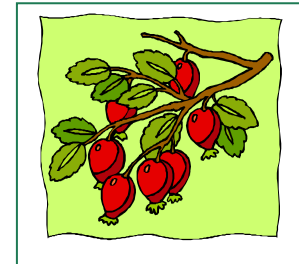
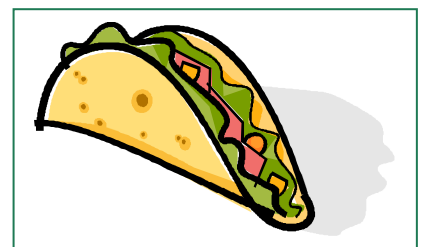
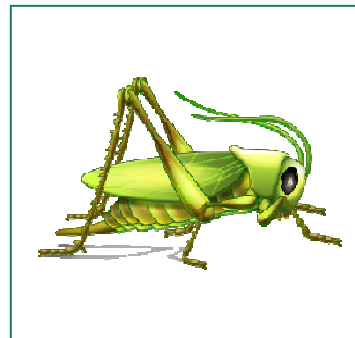
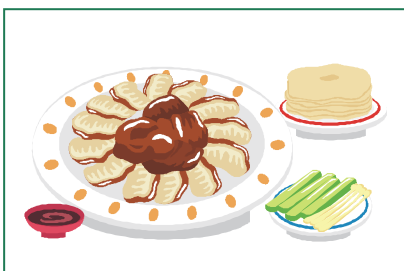
Which things would be in the place where kea live?



Colour in the picture and cut and stick the pictures from 4A. Include several kea doing kea things.



Which foods are good for kea? Put them on the Mountain picture you made with Worksheet 4.



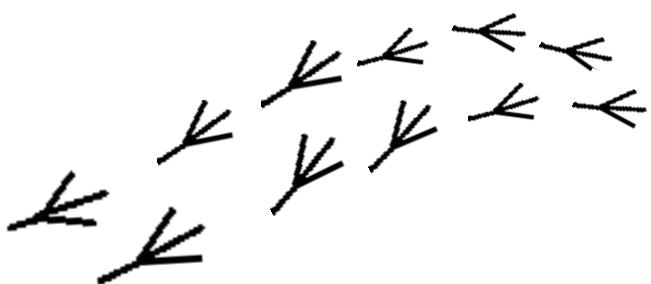
Can you make a diamond poem about a kea? Just use good words to describe it, and leave out the little words like the, a, it, is etc.

kea



A diamond-shaped poem template with a light green background. The template consists of four lines of horizontal lines, with the first and last lines being shorter than the second and third lines, forming a diamond shape. The word "kea" is written at the top and bottom of the diamond.

kea





Can you find these KEA words hidden in the word search?

KEA

NEST

ORANGE

UNIQUE

SOUTHERN ALPS

LEAD

SKIFIELDS

CURIOUS

JUVENILE

ROOT

GRUBS








INTELLIGENT

SAVE

COMICAL



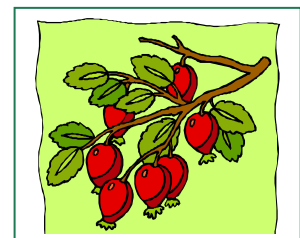
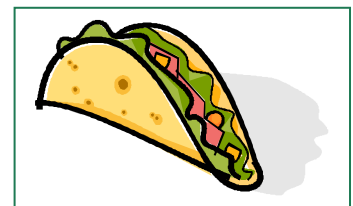
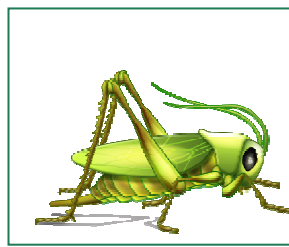
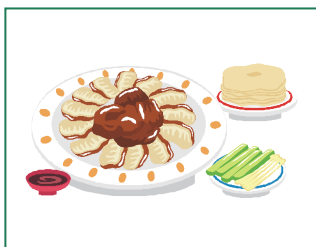
Which will come next?

							?
-------------------------------------------------------------------------------------	-------------------------------------------------------------------------------------	-------------------------------------------------------------------------------------	-------------------------------------------------------------------------------------	------------------------------------------------------------------------------------	-----------------------------------------------------------------------------------	-----------------------------------------------------------------------------------	---

							?
-------------------------------------------------------------------------------------	-------------------------------------------------------------------------------------	-------------------------------------------------------------------------------------	-------------------------------------------------------------------------------------	------------------------------------------------------------------------------------	-----------------------------------------------------------------------------------	-----------------------------------------------------------------------------------	---

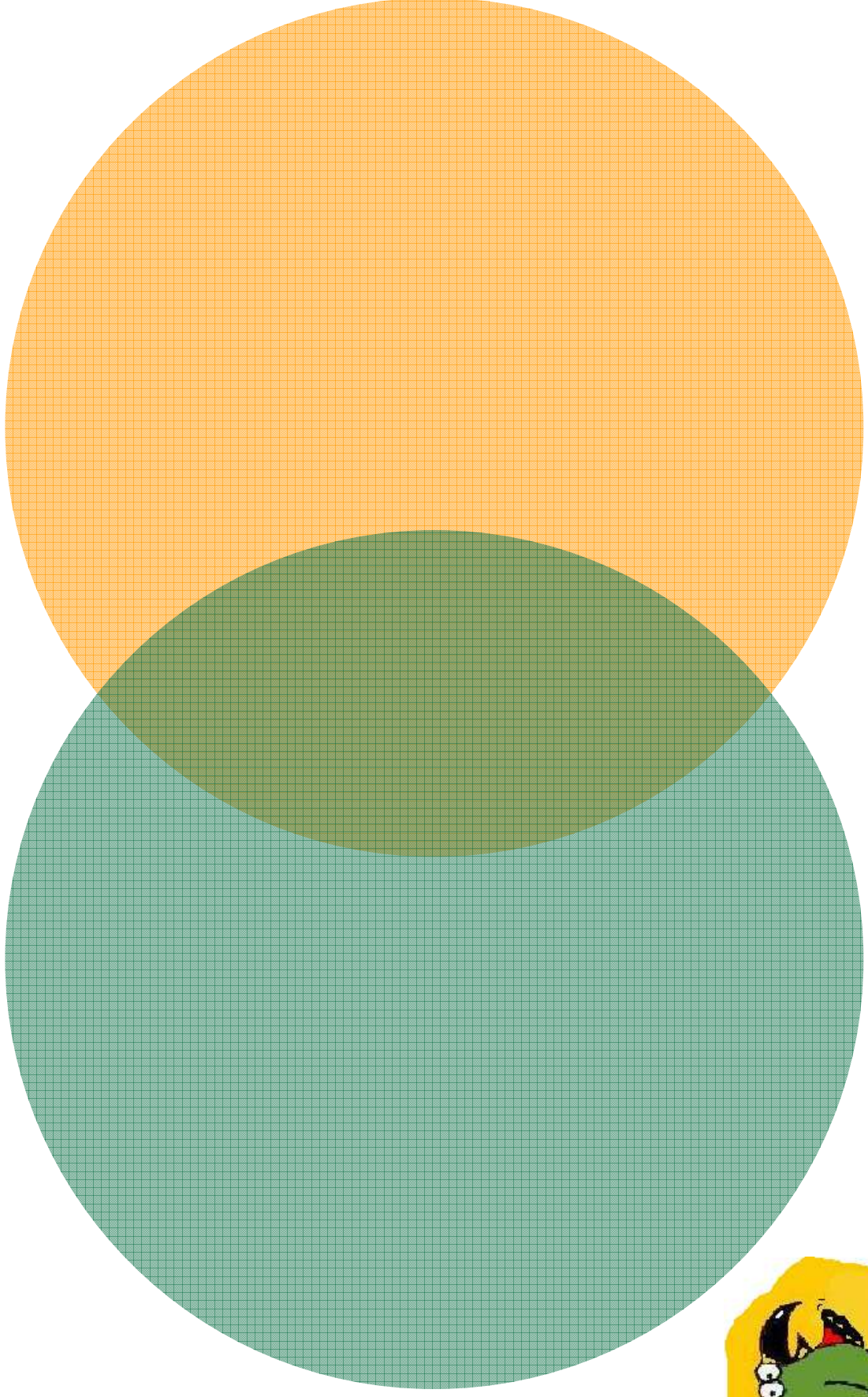
					?	?
---------------------------------------------------------------------------------------	---------------------------------------------------------------------------------------	---------------------------------------------------------------------------------------	--------------------------------------------------------------------------------------	-------------------------------------------------------------------------------------	---	---

**Which foods are for kea? Which are human food?
Is there anything both kea and humans should eat?**



Kea food

People food



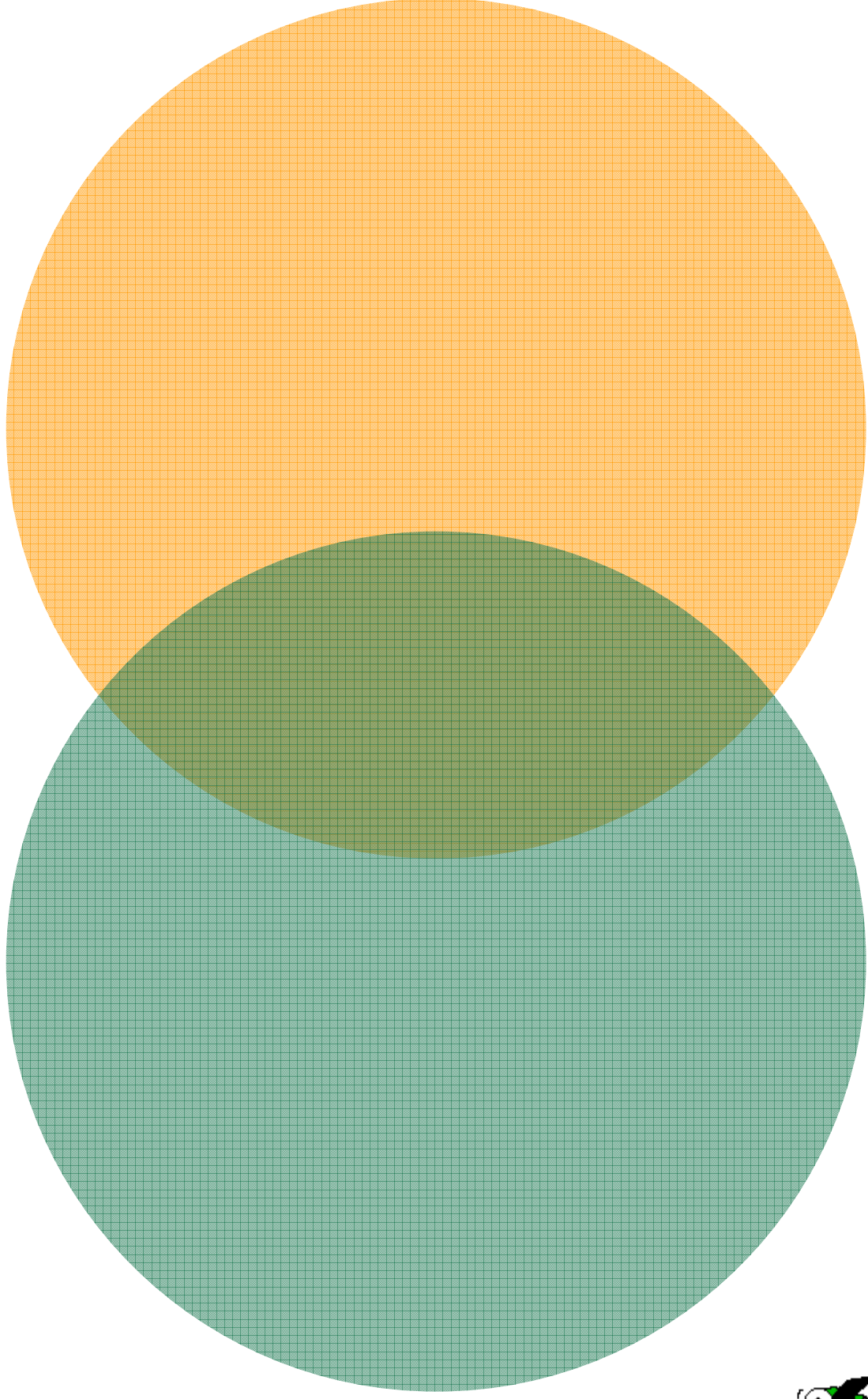
Food for people and kea



**Which things would be in the place where kea live,
and where you live? Are some things the same?
Put them on the Venn diagram.**



In both



Kea home

Human home



Unique Kea

Kea are unique because:

*

*

*

*

*

*

*

*

*

*



KEA

TRUE OR FALSE (colour in the true starbursts)

**Kea
can't
fly**

**Kea are
very
curious
and
intelligent**

**Kea
nest up
in trees**

**Kea are
blue and
green**

**Kea like
to live in
groups**

**Kea live
all over
New
Zealand**

**Kea are
protected**

**Kea eat
roots,
insects,
berries and
leaves.**

Check out the Kea Conservation Trust website for the answers.

Kea Care

This is what we can do to make sure that our kea are safe and well in the mountains:

*

*

*

*

*

*

*

*

*

*

*

*

*

*

*

*

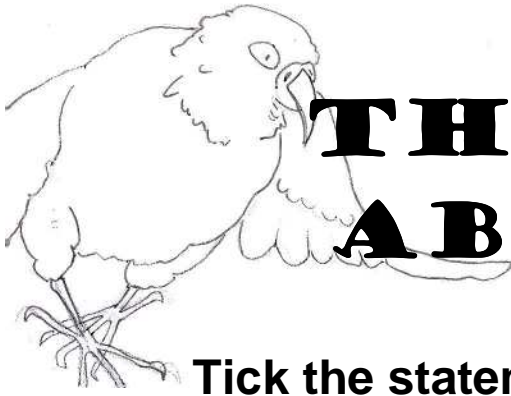


MATCHING

MATCH THE MEANING WITH THE WORD

A	Matching Number e.g. 5	NATIVE
B		PREDATOR
C		ENDANGERED
D		CURIOSITY
E		FOOD CHAIN
F		ENDEMIC
G		BEAK
H		HABITAT
I		KEA
J		INTRODUCED
K		DIURNAL

1	HORNY COVER OVER MOUTH PARTS USED TO COLLECT FOOD
2	ONLY FOUND IN ONE PLACE
3	WHAT MAKES A KEA INQUISITIVE
4	PLACE WHERE AN ANIMAL LIVES NATURALLY
5	ORIGINALLY NATURALLY IN A PARTICULAR COUNTRY OR REGION
6	PREYS ON OTHER ANIMALS
7	ACTIVE BY DAY
8	OF FOREIGN ORIGIN
9	FEEDING RELATIONSHIPS BETWEEN ANIMALS AND PLANTS
10	NZ ALPINE PARROT
11	IN DANGER OF BECOMING EXTINCT



THE TRUTH ABOUT KEA

Tick the statements below that are correct.
Use the Kea Conservation Trust website to help you.

- ◆ Kea live all over New Zealand.
- ◆ Kea are the only alpine parrot in the world.
- ◆ Kea build their nests in trees.
- ◆ The female bird sits on the eggs.
- ◆ Kea can get sick if they eat human's food.
- ◆ Kea are very shy.
- ◆ Kea mainly eat roots, berries and insects.
- ◆ Kea babies are already fully feathered when they hatch.
- ◆ Kea parents regurgitate feed their chicks.
- ◆ Kea are endangered.
- ◆ Kea can get sick from eating the lead off roofs and guttering.
- ◆ Kea cannot fly very far.
- ◆ Kea do not like to be with other kea.
- ◆ Kea live in the beech forest.
- ◆ Kea are very intelligent and curious.
- ◆ Kea have small beaks.